



Priced From

\$314,990

4 Exterior Styles Available

 **2,757+ Sq. Ft.**

 **4 Bedrooms**

 **3.5 Bathrooms**

 **2 Car Garage**

Welcome home to the Westmoreland where contemporary Southern comfort and flexibility are perfectly combined to make your dream home. This plan is designed to fit your lifestyle, and provides space to work from home, room to accommodate in-laws and entertain guests. This stunning and spacious home features a single-story plan with 4 bedrooms and 3.5 baths including the primary suite and stunning primary bath complete with a walk-in closet.

The split-bedroom design wastes no space and creates your own oasis by giving your family absolute privacy. Turn the optional flex room into a guest room, office, dining room, or a playroom for the kids! The large kitchen complete with an island opens up into the spacious great room and breakfast room providing you with plenty of space for relaxing or spending time with family and loved ones. The covered porch is the perfect place to unwind together with a glass of sweet tea. The Westmoreland is completely customizable to fit your needs and fulfill all your dreams.



Classic



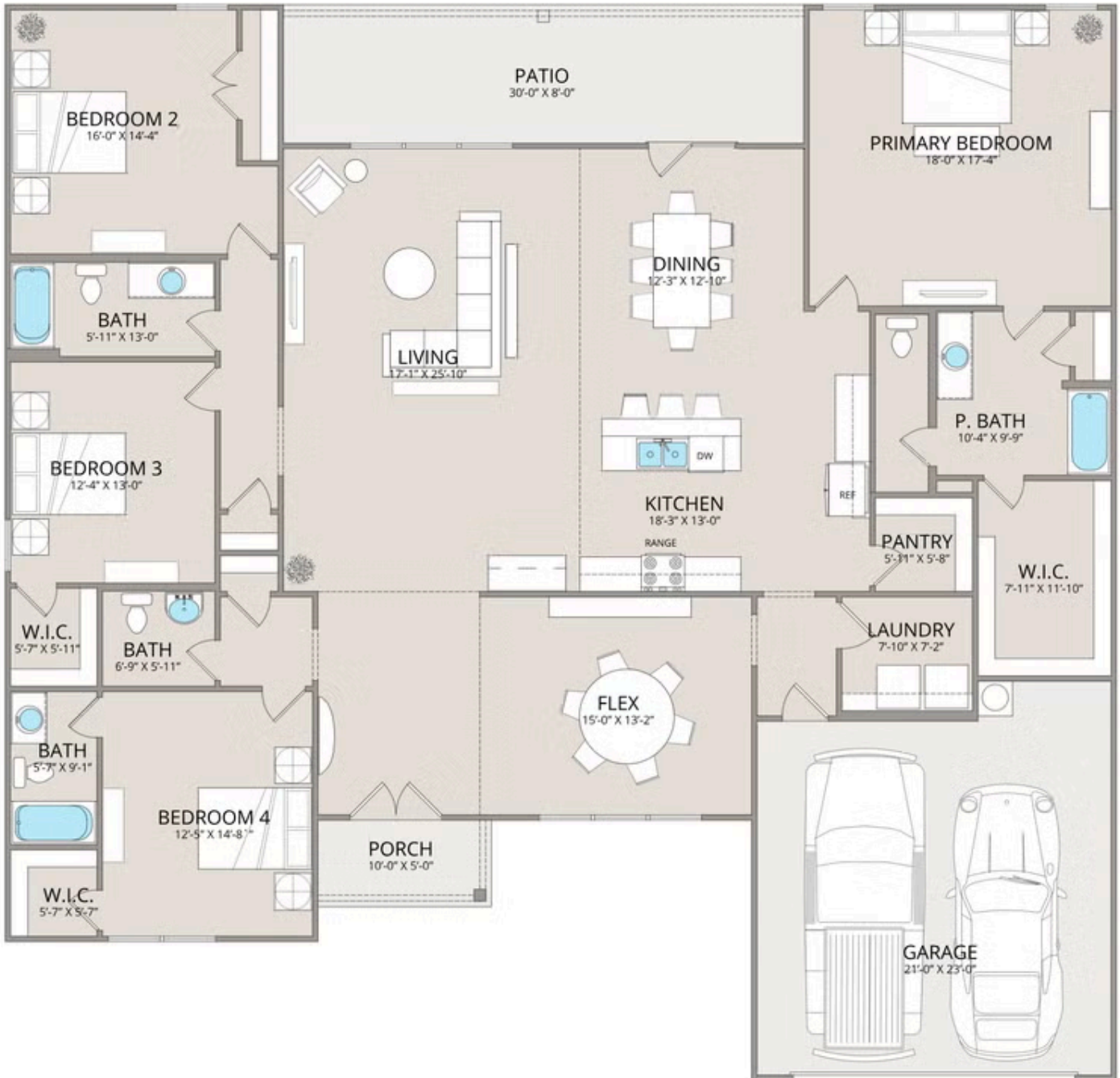
Craftsman



Farmhouse



Brick



All square footage is approximate. Renderings are artist's conceptions and may vary slightly from the actual home. Homes may be built in reverse of plans shown, depending on site conditions. Minor architectural changes may be made occasionally at the option of the builder. Please contact your Sales Consultant for details.



All square footage is approximate. Renderings are artist's conceptions and may vary slightly from the actual home. Homes may be built in reverse of plans shown, depending on site conditions. Minor architectural changes may be made occasionally at the option of the builder. Please contact your Sales Consultant for details.