




Priced From

# \$267,990

**2 Exterior Styles Available**

 **1,400+ Sq. Ft.**

 **2 Bedrooms**

 **2 Bathrooms**

 **2 Car Garage**

The Mustang Ranch is a beautiful barndominium offering 1,400 square feet of heated living space, complete with 2 bedrooms and 2 bathrooms. The open-concept layout connects the living, dining, and kitchen areas, creating a warm and inviting space perfect for family time and entertaining. The soaring 12-foot ceilings enhance the home's spaciousness and charm. The home portion of this barndominium is part of our Design By U series, meaning that the home's floorplan can be easily modified with additional bedrooms and bathrooms, depending on you and your family's needs. One of the standout features of the Mustang Ranch is its 24' x 28' workspace/garage with an 18' wide door. The 18' door is also 10' high to accommodate a farm tractor, boat or most RV's and it has a 10'x10' garage door on the backside of the space for drive-thru capability!. The ceilings in the workspace/garage are 12' high. Another lifestyle plus is its stunning optional wraparound porch, offering 509 square feet of outdoor living space if chosen to add to your home. With its blend of practicality and style, the Mustang Ranch is an ideal choice for those dreaming of a cozy and functional home. Home plan photo may showcase choice flooring options.

Call 910-218-1039 for pricing!

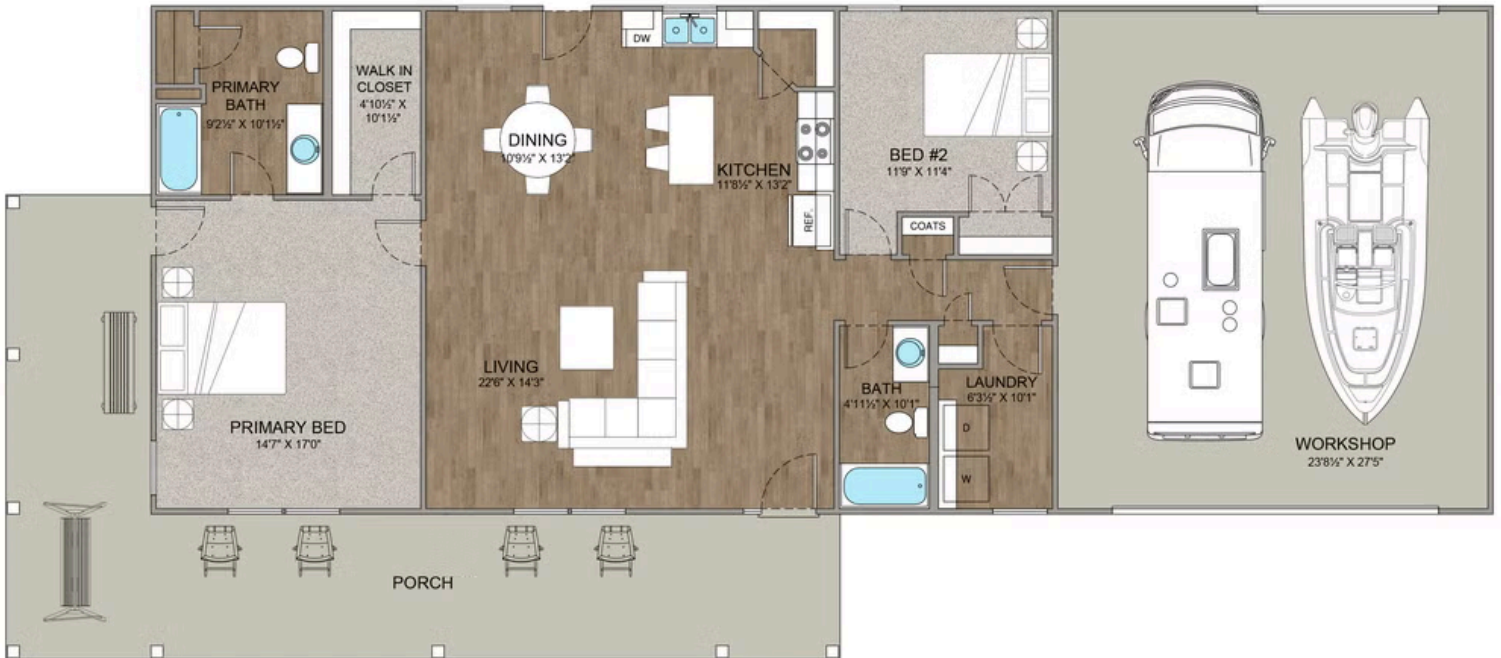
# Mustang Ranch Barndominium

Fairfield



This brochure likely depicts actual pictures of homes that were personalized for their owners by Red Door Homes, so what is pictured may not be the Included Feature version of this Home Plan or even be an actual depiction of size, etc. due to available structural changes. Furthermore, Red Door Homes reserves the right to make changes or updates to home plans at any time, so the best information can be learned by speaking with one of our Dream Home Consultants to better understand what we have available, how you can personalize the home to your liking, and create your own Dream Home.

Wrap around porch is optional personal choice and not included in classic price shown



This brochure likely depicts actual pictures of homes that were personalized for their owners by Red Door Homes, so what is pictured may not be the Included Feature version of this Home Plan or even be an actual depiction of size, etc. due to available structural changes. Furthermore, Red Door Homes reserves the right to make changes or updates to home plans at any time, so the best information can be learned by speaking with one of our Dream Home Consultants to better understand what we have available, how you can personalize the home to your liking, and create your own Dream Home.