




Priced From

\$158,990

3 Exterior Styles Available

 **1,260+ Sq. Ft.**

 **3 Bedrooms**

 **2 Bathrooms**

This charming floor plan creates the perfect space for relaxing and watching the game, or hosting an evening with family and loved ones. Just imagine coming home and enjoying a warm summer evening from the comfort of your front porch. The Pine offers 3 bedrooms and 2 bathrooms including a primary suite with a beautiful bathroom and walk-in closet. The spacious great room opens up to the dining room and kitchen with an optional kitchen island that creates the perfect place to spend an evening with the kids or hosting game night with your friends. This floor plan is customizable to meet your needs and fulfill all your dreams.



Classic

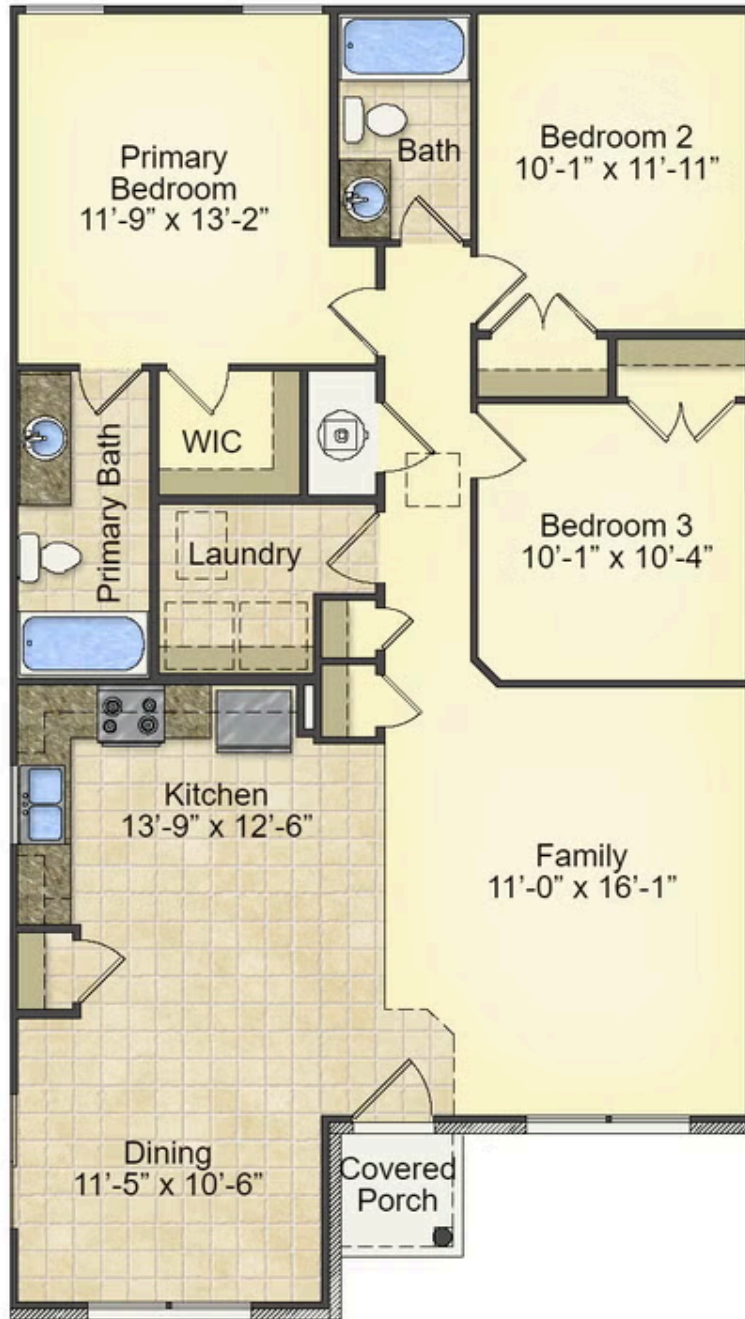


Craftsman



Farmhouse

All square footage is approximate. Renderings are artist's conceptions and may vary slightly from the actual home. Homes may be built in reverse of plans shown, depending on site conditions. Minor architectural changes may be made occasionally at the option of the builder. Please contact your Sales Consultant for details.



All square footage is approximate. Renderings are artist's conceptions and may vary slightly from the actual home. Homes may be built in reverse of plans shown, depending on site conditions. Minor architectural changes may be made occasionally at the option of the builder. Please contact your Sales Consultant for details.