



Priced From

\$189,990

2 Exterior Styles Available

 **1,539+ Sq. Ft.**

 **3 Bedrooms**

 **2.5 Bathrooms**

 **2 Car Garage**

Introducing the "Conway" - a charming two-story home designed for comfort and functionality. This cozy home boasts three bedrooms, two and a half bathrooms, and a convenient two-car garage, all spread across 1539 square feet of living space.

Step inside to discover the inviting main floor, featuring an open-concept layout seamlessly blending the living, dining, and kitchen areas. Adjacent to the kitchen lies a convenient laundry room and a half bathroom, adding practicality to everyday living.

On the second floor, you'll find a spacious primary suite complete with a large walk-in closet for ample storage. Additionally, two more bedrooms offer plenty of room for family or guests, each equipped with its own spacious closet.

With its thoughtful design and comfortable living spaces, the "Conway" is the ideal retreat for those seeking both togetherness and functionality in their home. Imagine the "Conway" on build on your land, just the way you want it.



Craftsman

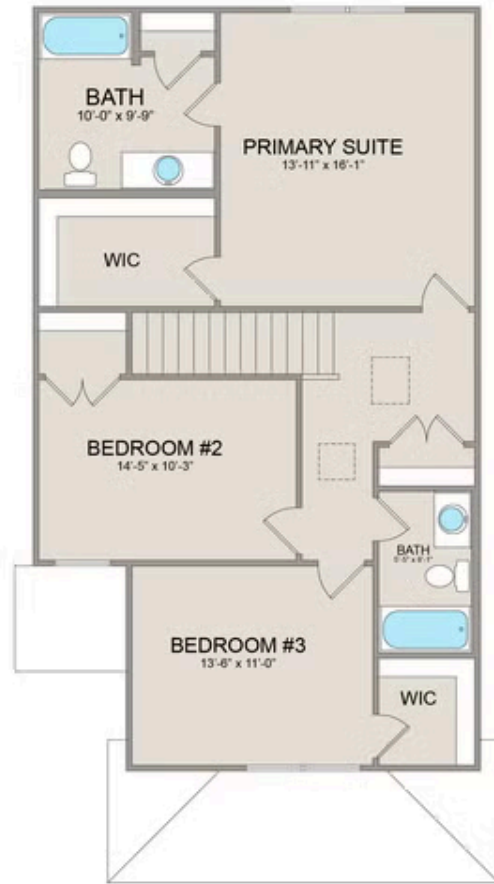


Farmhouse

All square footage is approximate. Renderings are artist's conceptions and may vary slightly from the actual home. Homes may be built in reverse of plans shown, depending on site conditions. Minor architectural changes may be made occasionally at the option of the builder. Please contact your Sales Consultant for details.



MAIN



UPPER

All square footage is approximate. Renderings are artist's conceptions and may vary slightly from the actual home. Homes may be built in reverse of plans shown, depending on site conditions. Minor architectural changes may be made occasionally at the option of the builder. Please contact your Sales Consultant for details.