




**Priced From**

**\$215,990**

**1 Exterior Styles Available**

 **1,539+ Sq. Ft.**

 **3 Bedrooms**

 **2.5 Bathrooms**

 **2 Car Garage**

The Farmville is a charming two-story home that balances comfort and functionality, offering three bedrooms, two and a half bathrooms, and a two-car garage across 1,539 square feet of well-planned living space.

Step inside to an open-concept main floor, where the living, dining, and kitchen areas flow together seamlessly, creating a warm and inviting atmosphere. The kitchen is designed with upgraded cabinetry, granite countertops, stainless steel appliances, and a sleek pull-out faucet, making it both stylish and practical. A conveniently located laundry room and half bathroom add ease to everyday routines.

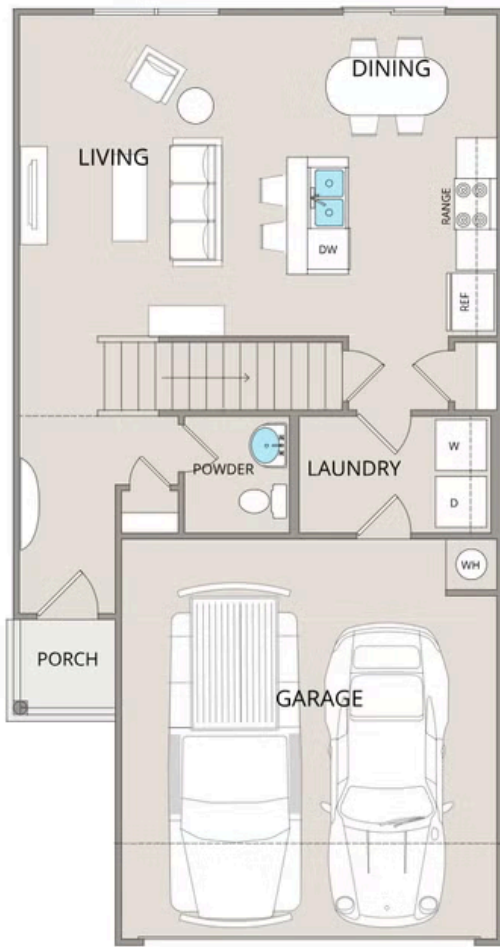
Upstairs, the spacious primary suite features a large walk-in closet and an upgraded en-suite bathroom with a fiberglass shower, raised-height vanity, and modern finishes. Two additional bedrooms provide flexibility for guests, a home office, or extra storage, each offering generous closet space.

With a versatile layout and customizable options, the Farmville is designed to fit your lifestyle. From upgraded baseboards and stylish interior doors to coordinated hardware and high-quality finishes, every detail enhances both aesthetics and functionality.

The Farmville is more than just a house—it's a space designed for comfort, convenience, and the opportunity to make it truly your own.



All square footage is approximate. Renderings are artist's conceptions and may vary slightly from the actual home. Homes may be built in reverse of plans shown, depending on site conditions. Minor architectural changes may be made occasionally at the option of the builder. Please contact your Sales Consultant for details.



All square footage is approximate. Renderings are artist's conceptions and may vary slightly from the actual home. Homes may be built in reverse of plans shown, depending on site conditions. Minor architectural changes may be made occasionally at the option of the builder. Please contact your Sales Consultant for details.