



Priced From

\$202,990

3 Exterior Styles Available

 **1,568+ Sq. Ft.**

 **3 Bedrooms**

 **2 Bathrooms**

The Hidden Valley is a charming barndominium design that combines cozy living with modern convenience. With 1,568 square feet of heated space, this design features an open-concept layout that seamlessly connects the family room, kitchen, and dining area. It's a perfect setup for both everyday living and hosting gatherings with loved ones. The home portion of this barndominium is part of our Design By U series, meaning that the home's floorplan can be easily modified with additional bedrooms and bathrooms, depending on you and your family's needs.

This thoughtfully crafted plan also offers flexible options for attached garages, so you can customize the home to fit your needs. These are designed as 12' x 34' so more of a traditional garage, but with plenty of space. This particular plan has 9' doors on each side. The flexibility of this plan is also evident in many ways, not only can the home itself be essentially "whatever you want", the side garages can be removed for just a simple Farmhouse, or you could choose one on the left side of the home and convert the right side to an inviting porch, or even consider an In-Law Suite? The functionality and choices are endless. The inviting front porch adds a warm, welcoming touch, making it easy to imagine relaxing evenings and quality time spent outdoors. The Hidden Valley is more than a house—it's a place to call home.

Give us a call at 910-218-1039 for pricing today!

This brochure likely depicts actual pictures of homes that were personalized for their owners by Red Door Homes, so what is pictured may not be the Included Feature version of this Home Plan or even be an actual depiction of size, etc. due to available structural changes. Furthermore, Red Door Homes reserves the right to make changes or updates to home plans at any time, so the best information can be learned by speaking with one of our Dream Home Consultants to better understand what we have available, how you can personalize the home to your liking, and create your own Dream Home.

Hidden Valley Barndominium

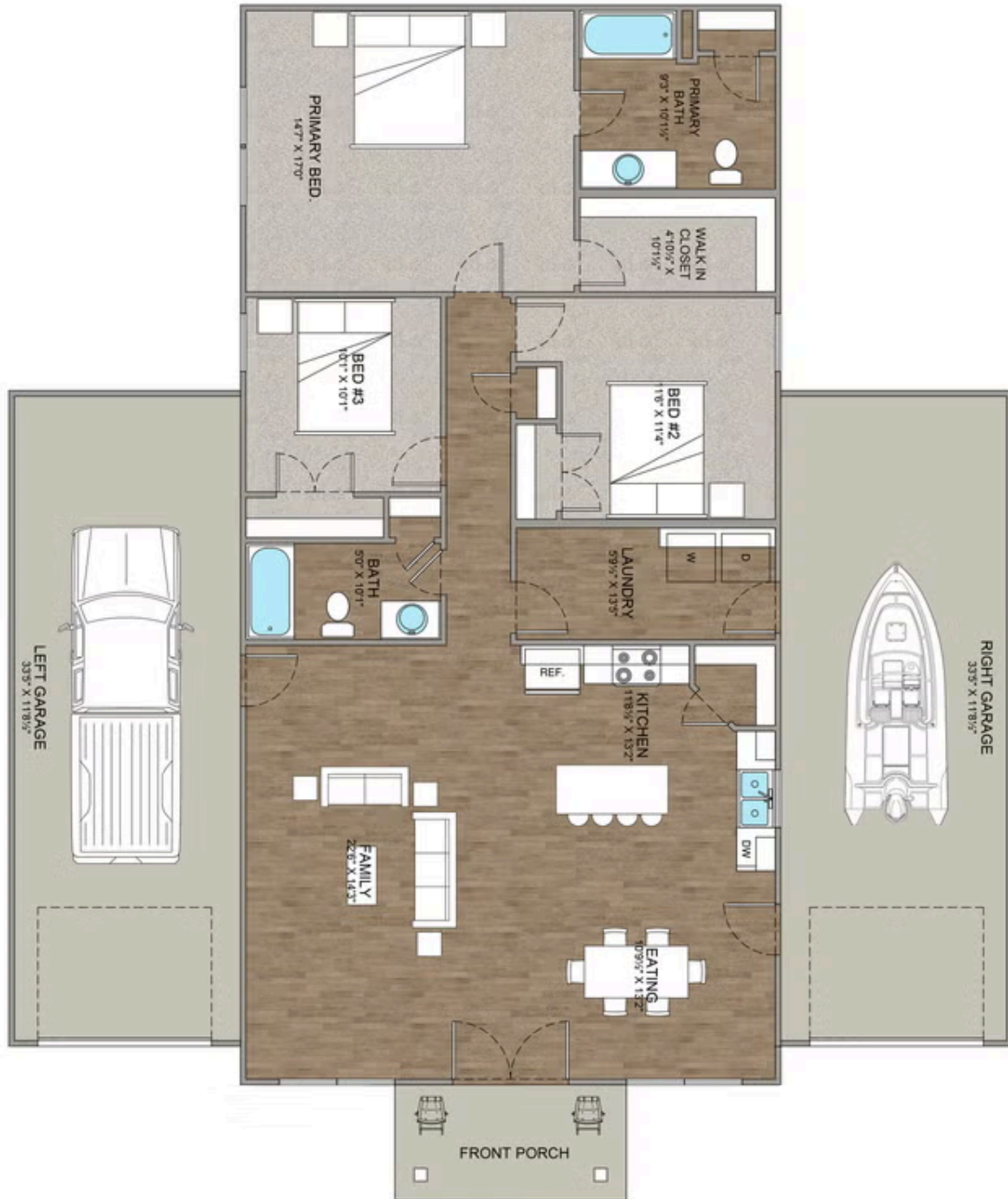
Edgecombe



This brochure likely depicts actual pictures of homes that were personalized for their owners by Red Door Homes, so what is pictured may not be the Included Feature version of this Home Plan or even be an actual depiction of size, etc. due to available structural changes. Furthermore, Red Door Homes reserves the right to make changes or updates to home plans at any time, so the best information can be learned by speaking with one of our Dream Home Consultants to better understand what we have available, how you can personalize the home to your liking, and create your own Dream Home.

Hidden Valley Barndominium

Edgecombe



This brochure likely depicts actual pictures of homes that were personalized for their owners by Red Door Homes, so what is pictured may not be the Included Feature version of this Home Plan or even be an actual depiction of size, etc. due to available structural changes. Furthermore, Red Door Homes reserves the right to make changes or updates to home plans at any time, so the best information can be learned by speaking with one of our Dream Home Consultants to better understand what we have available, how you can personalize the home to your liking, and create your own Dream Home.