




Priced From

**\$166,990****1 Exterior Styles Available** **1,176+ Sq. Ft.** **3 Bedrooms** **2 Bathrooms**

The **Faison** is a warm and inviting one-story home designed for modern living. With a bright, open layout, this home makes it easy to transition from one space to the next. Offering **three bedrooms and two full bathrooms**, the Faison provides both flexibility and functionality for growing families, couples, or individuals looking for a thoughtfully designed space.

At the heart of the home, the **spacious great room** seamlessly connects to the **eat-in kitchen**, creating the perfect space for gathering and entertaining. The kitchen features **upgraded cabinetry, granite countertops, stainless steel appliances, and a stylish pull-out faucet**, blending both beauty and practicality. Natural light fills the living areas, enhancing the warm and welcoming atmosphere.

The **primary bedroom** is designed with privacy in mind, featuring a **walk-in closet** and an **upgraded en-suite bathroom** with a fiberglass shower, raised-height vanity, and sleek finishes. Two additional bedrooms provide extra space for family, guests, or a home office.

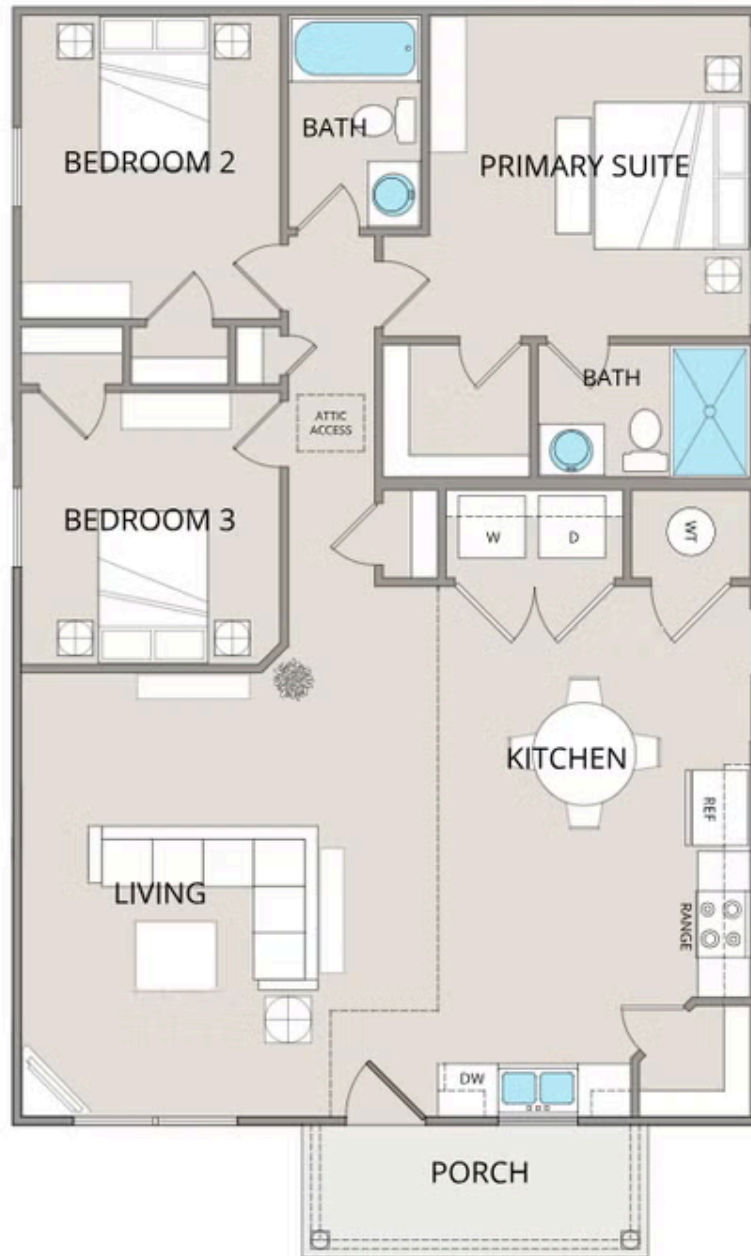
With options to **add a garage or a covered porch**, you can customize the Faison to fit your lifestyle. Whether you're sipping coffee while watching the sunrise or creating your dream kitchen for entertaining, this home is designed to adapt to your needs. Stylish interior touches, including upgraded baseboards, custom door options, and coordinated hardware, bring a polished look to every corner.

The **Faison** floorplan is the perfect blend of comfort, style, and functionality—ready to become the home you've always envisioned.

All square footage is approximate. Renderings are artist's conceptions and may vary slightly from the actual home. Homes may be built in reverse of plans shown, depending on site conditions. Minor architectural changes may be made occasionally at the option of the builder. Please contact your Sales Consultant for details.



All square footage is approximate. Renderings are artist's conceptions and may vary slightly from the actual home. Homes may be built in reverse of plans shown, depending on site conditions. Minor architectural changes may be made occasionally at the option of the builder. Please contact your Sales Consultant for details.



All square footage is approximate. Renderings are artist's conceptions and may vary slightly from the actual home. Homes may be built in reverse of plans shown, depending on site conditions. Minor architectural changes may be made occasionally at the option of the builder. Please contact your Sales Consultant for details.